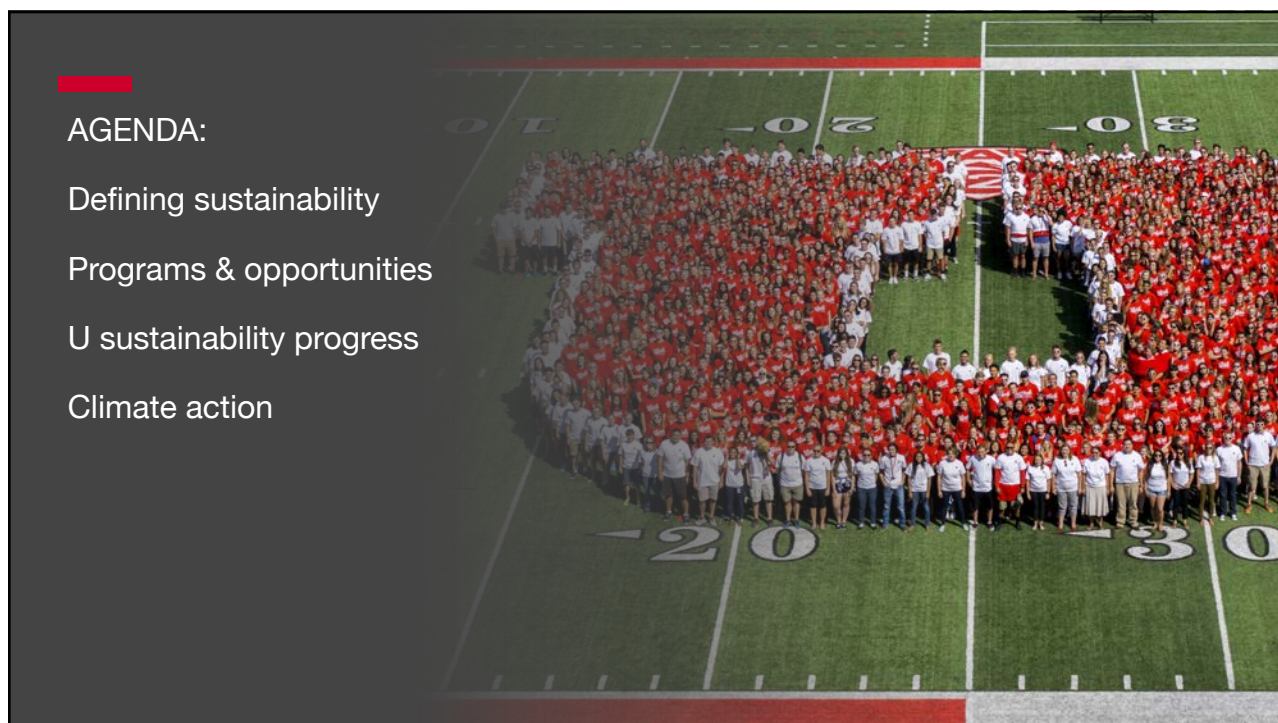




1



2



3

Sustainability is the integrated pursuit of social equity, environmental integrity, and economic security for current and future generations.

—University of Utah sustainability definition



4



5

Sustainability
Office

The Sustainability Office empowers students, employees, and the broader community through education, engagement, and collaborative action to build a sustainable future.

Core Strategies

- Cultivate sustainable learning opportunities
- Connect people with sustainability practices, programs and resources
- Catalyze sustainability action
- Collect data to track progress, identify best practices and implement change
- Communicate campus sustainability initiatives and metrics

2024-2027 Strategic Goals

- Integrate sustainability into curricula across the university (CAP Strategy 2.1)
- Expand sustainability learning opportunities beyond the classroom (CAP Strategy 2.2)
- Connect students and employees to sustainability resources
- Support success and well-being for all students and employees

6

SUSTAINABILITY OFFICE PROGRAMS



CAMPUS

- Edible Campus Gardens
- Sustainable Transportation
- Climate Action
- STARS



CURRICULUM

- Sustainability Education Advisory Committee
- SUST Course Attribute
- Faculty Teaching Workshop
- Incentives

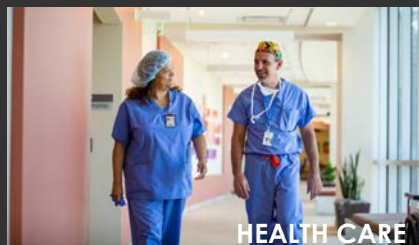
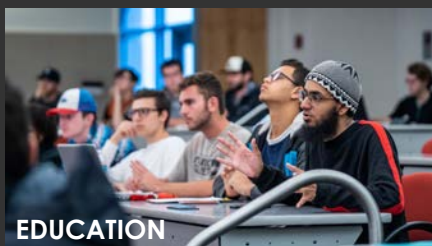


ENGAGEMENT

- Sustainable Campus Initiative Fund (SCIF)
- Workshops & Events
- Green Office Program
- Student Internships

7

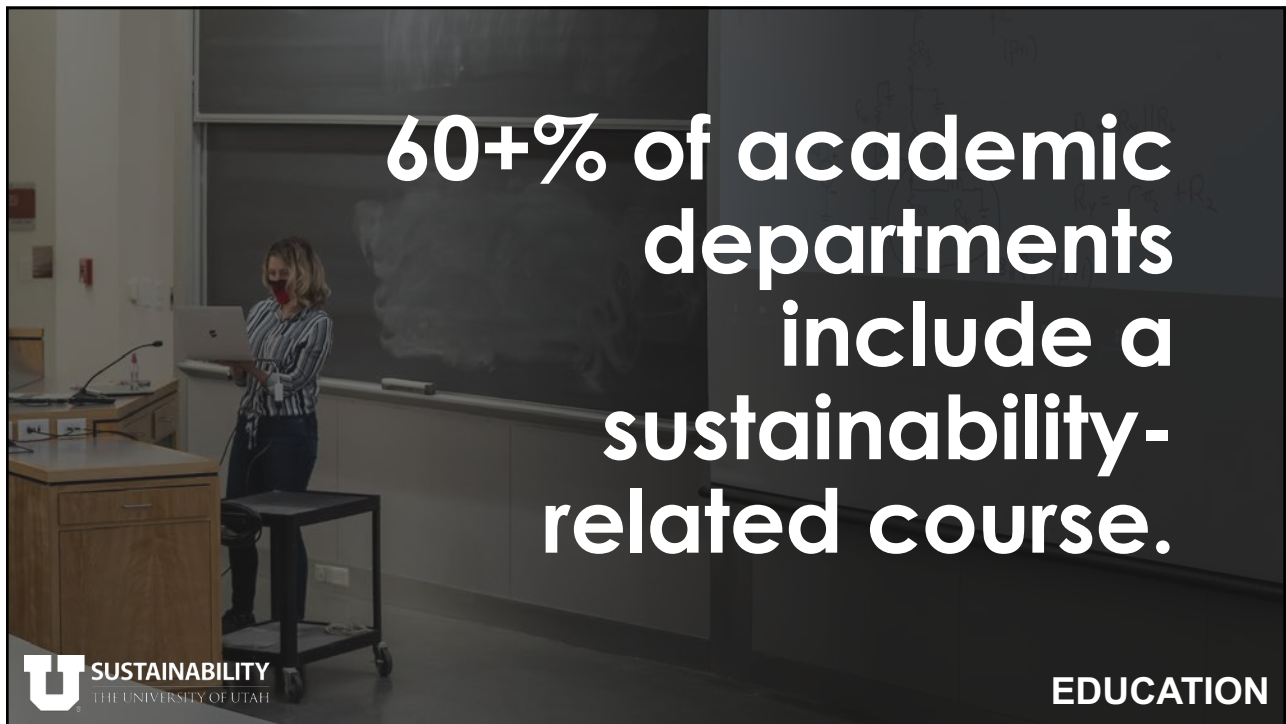
Building a more sustainable community



8



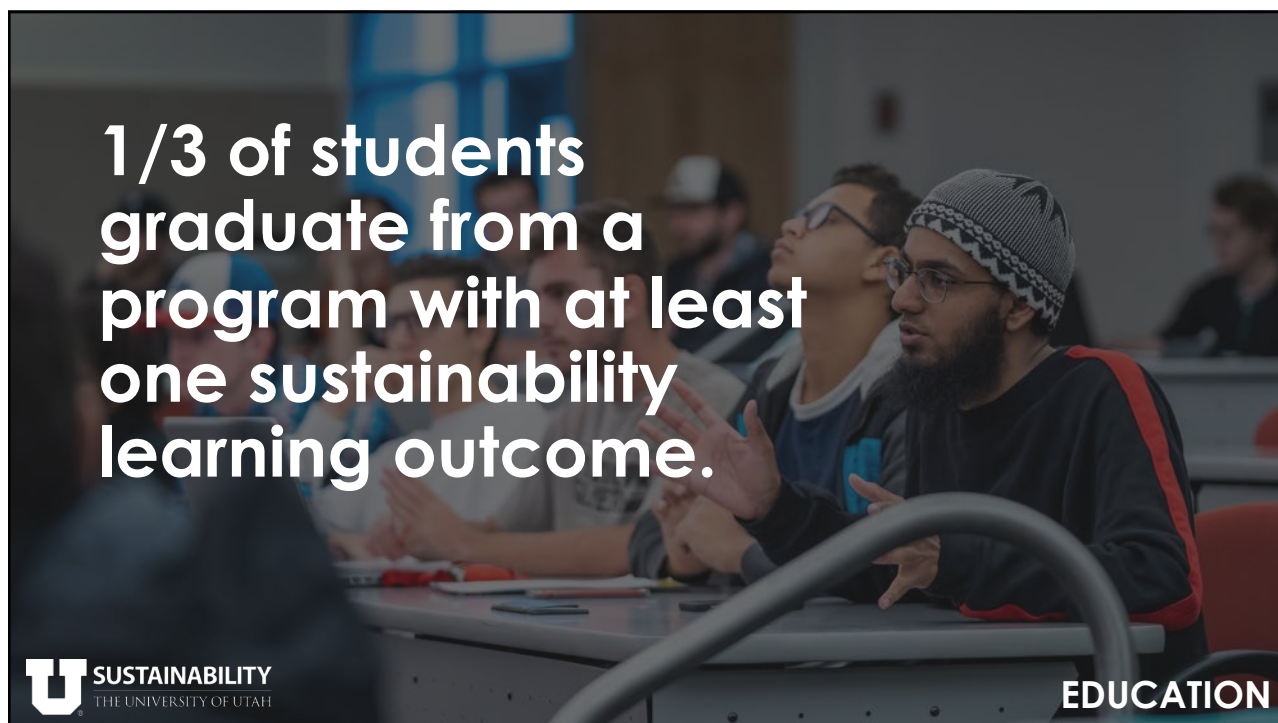
9



10



11



12




13



14

More information: environment.utah.edu

AIR QUALITY	BUILT ENVIRONMENT & COMMUNITIES	CLIMATE CHANGE
ECOLOGICAL & ENVIRONMENTAL CHANGE	ENERGY	FOOD SYSTEMS
JUSTICE, EQUITY, & DIVERSITY	NATURE & CULTURE	WATER

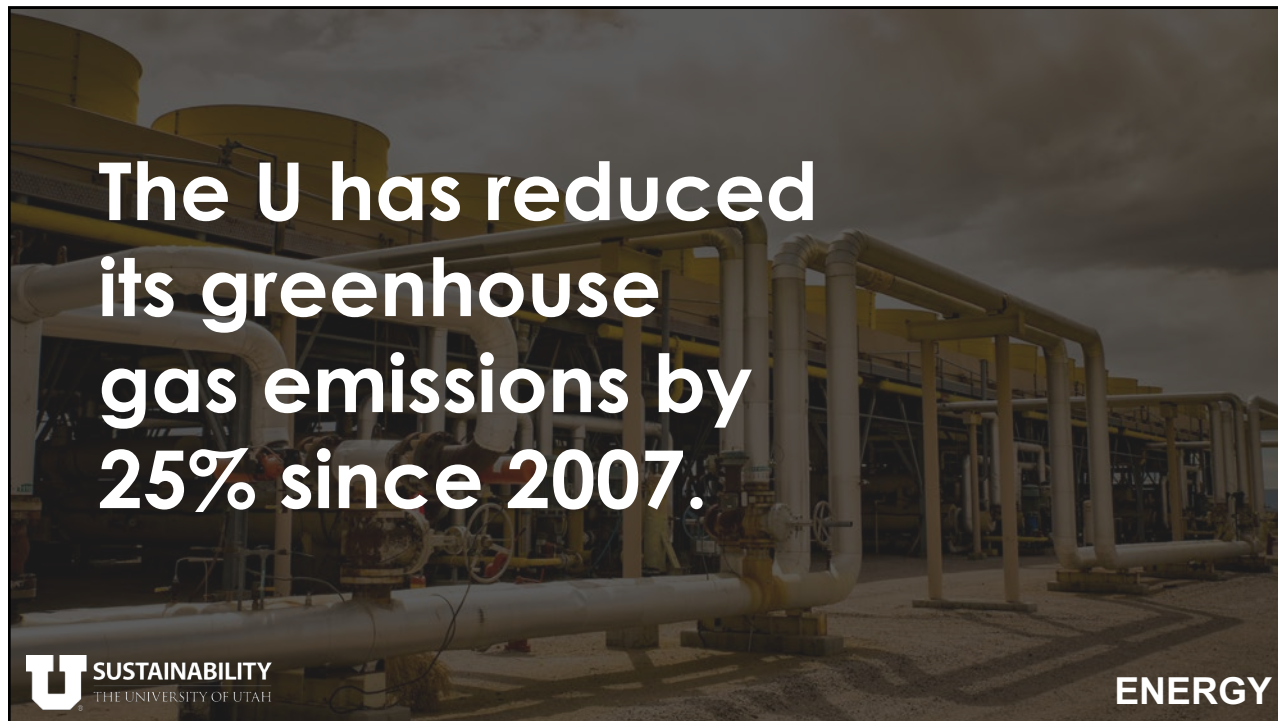
 **SUSTAINABILITY**
THE UNIVERSITY OF UTAH

RESEARCH

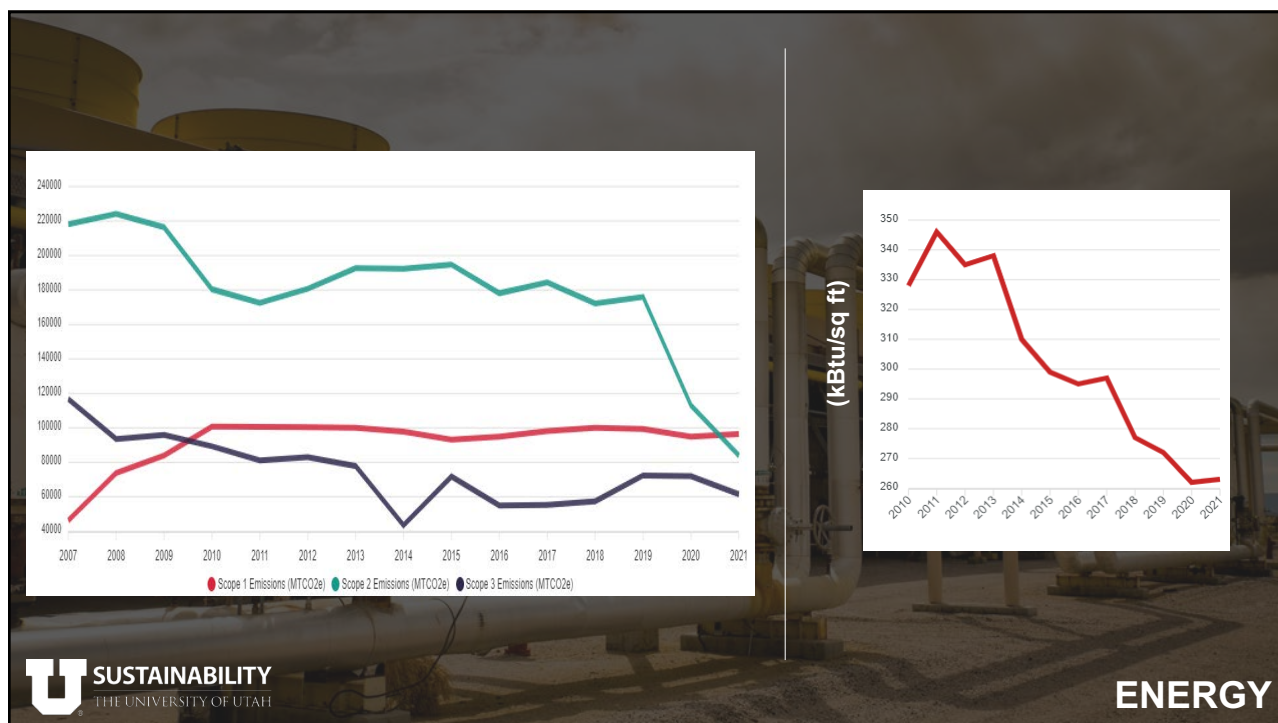
15



16



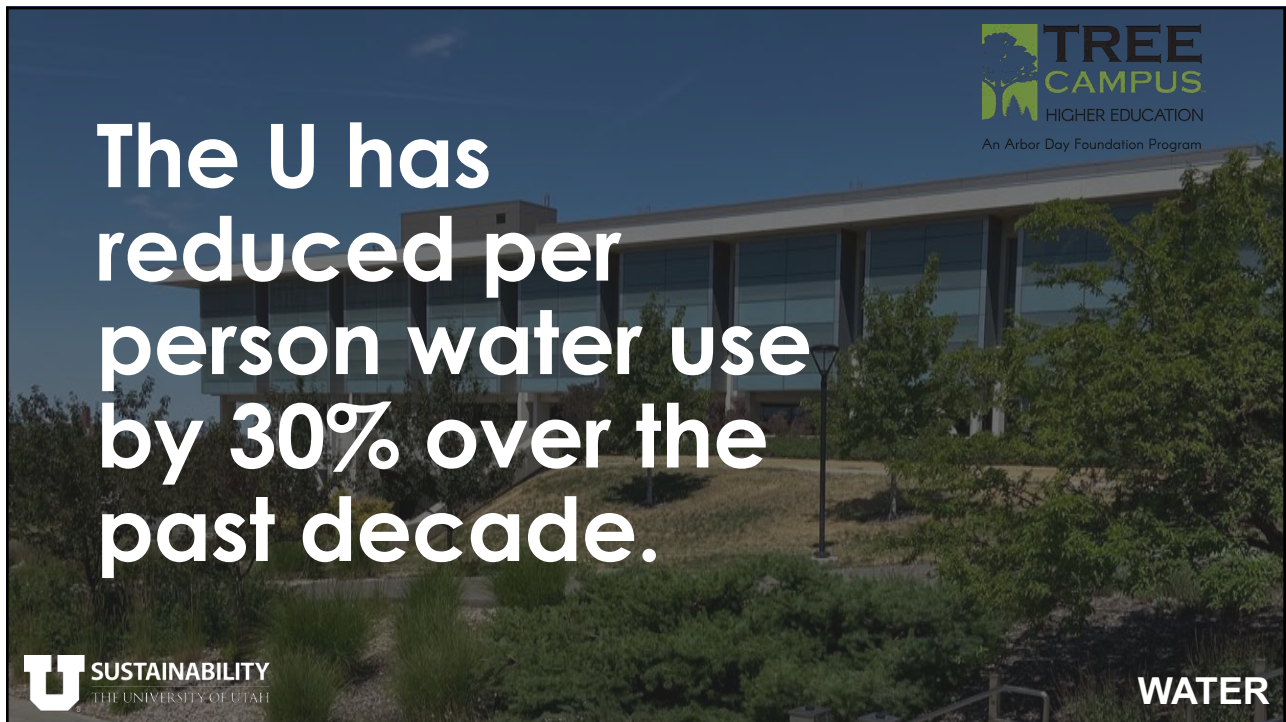
17



18



19



20

Track sustainability progress: sustainability.utah.edu/dashboard



21

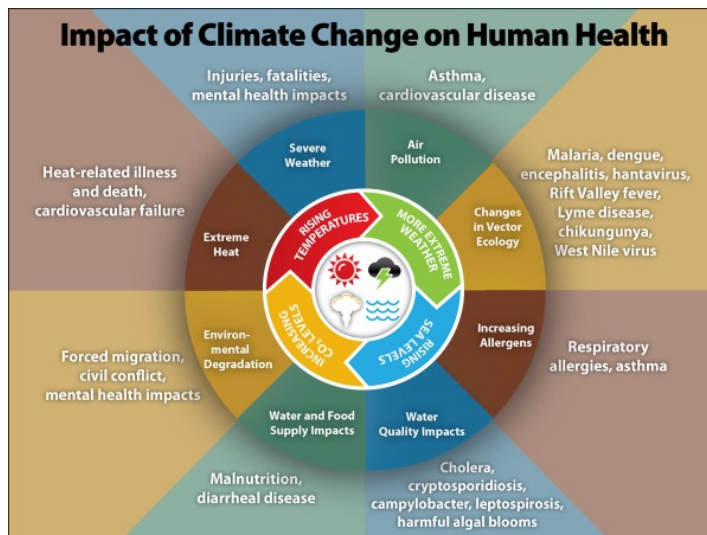


22

THE ENVIRONMENT & HEALTH

Our health is impacted by our environment

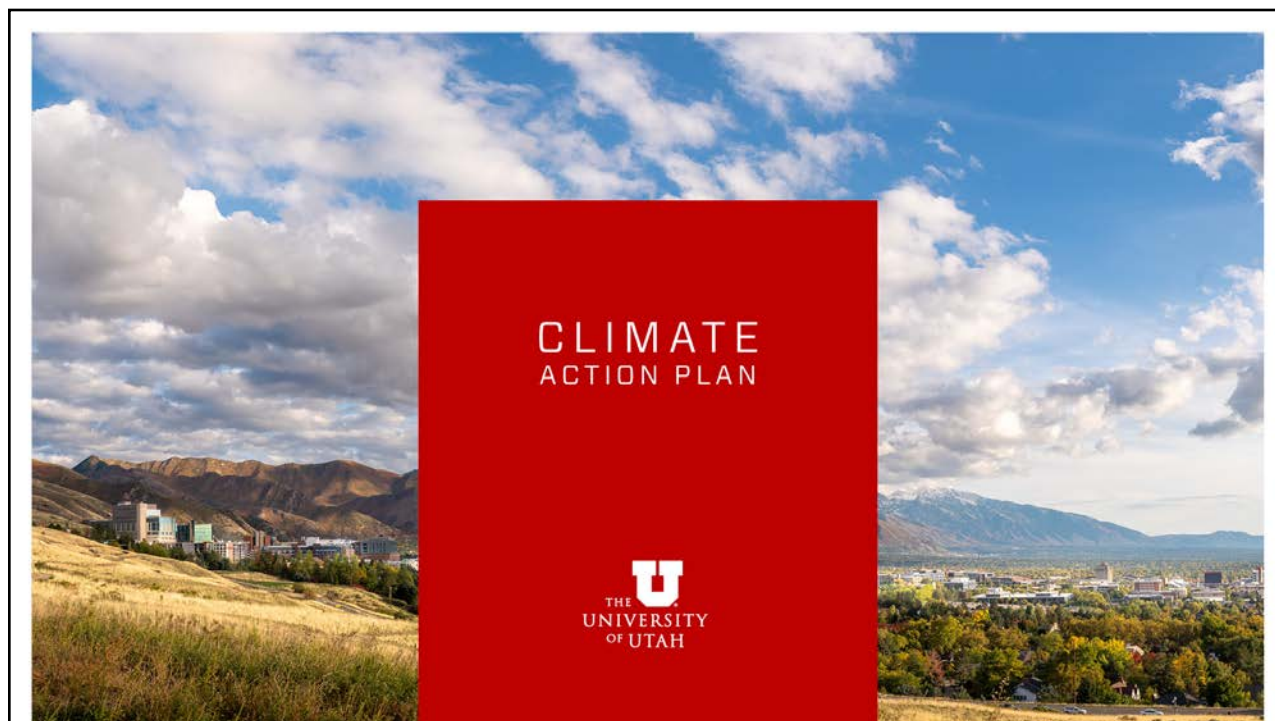
Climate change will affect public health



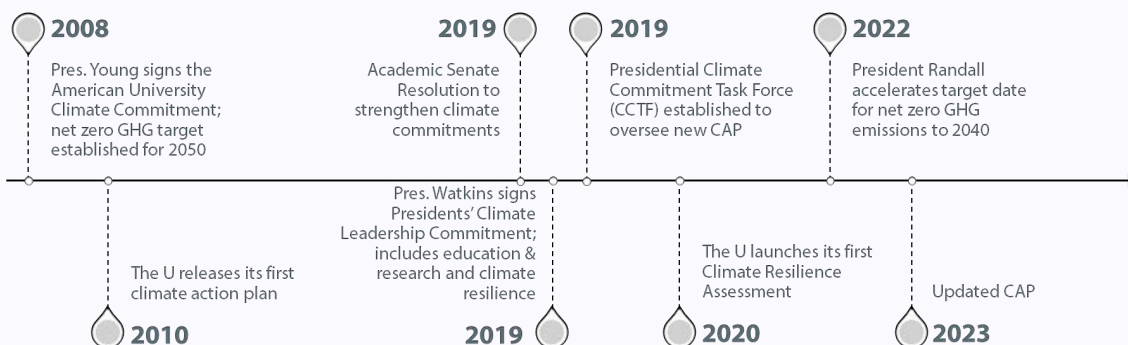
<https://www.cdc.gov/climateandhealth/effects/default.htm>



CONFIDENTIAL



Why a new CAP now?



25

Why a new Climate Action Plan?

- Extreme heat
- Poor air quality
- Rainfall flooding
- Severe storms
- Drought / water insecurity
- Wildfire & wildfire smoke
- Loss of biodiversity
- Environmental degradation
- Mental health stress
- Disease outbreak



26

What will the CAP help us do?

- Respond to changes since 2010 CAP
- Meet our goals and commitments:
 - Presidents' Climate Leadership Commitments
 - Health & Human Services Climate Pledge
- Lead on climate locally and nationally
- Help secure external funding



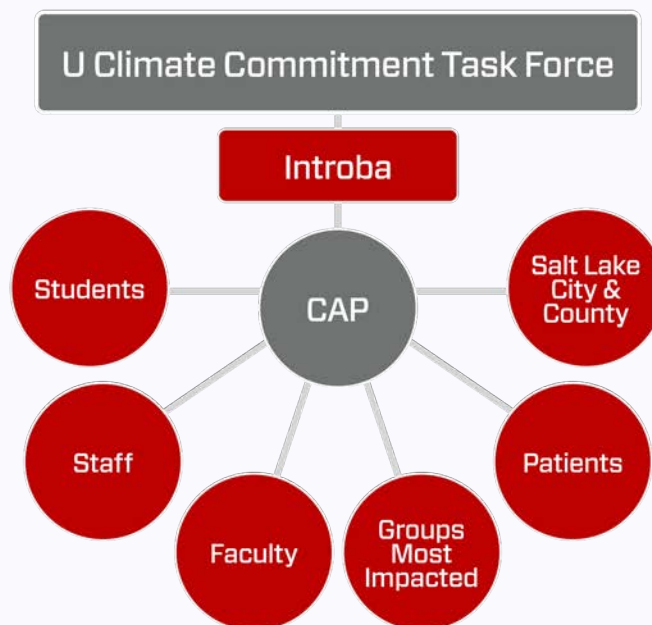
University Climate
Change Coalition



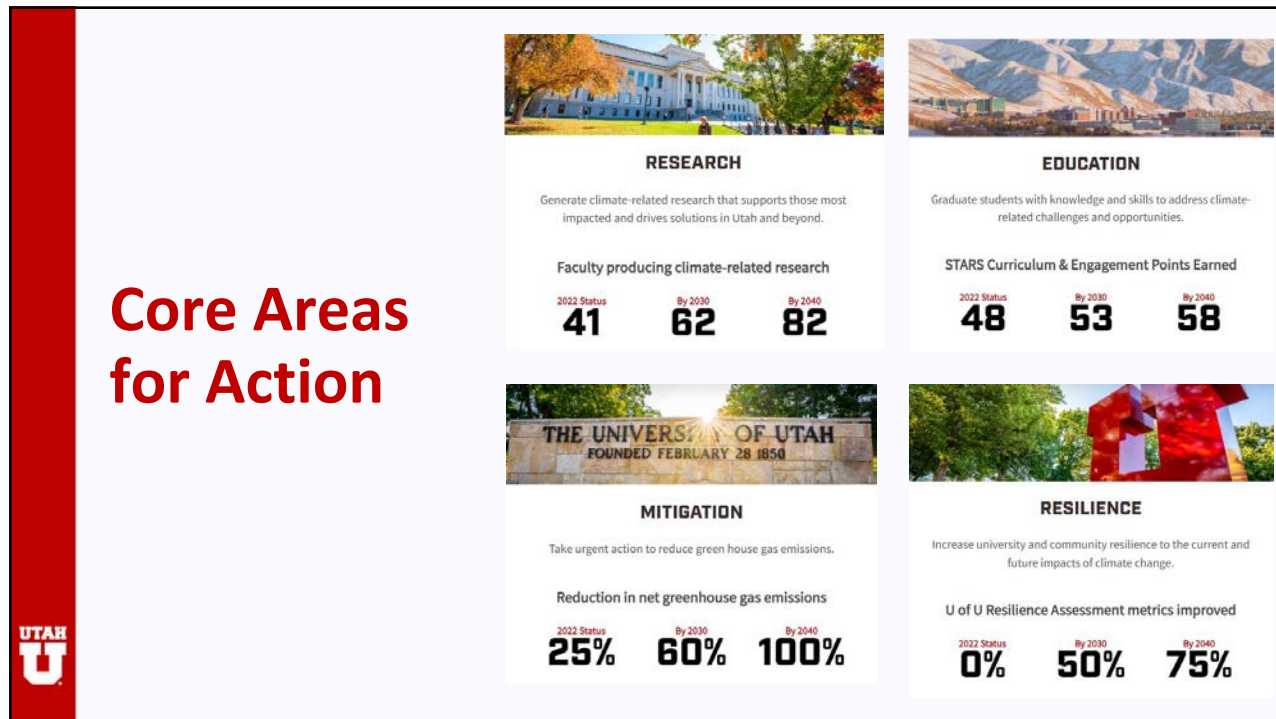
27

How the CAP was developed

- 4000+ participants engaged
- Multiple avenues for input
- Engagement with groups most impacted



28



29

CAP EDUCATION GOALS, STRATEGIES, & ACTIONS

Goal 2.0: Graduate students with knowledge and skills to address climate-related challenges and opportunities.

- **Strategy 2.1 Integrate sustainability into curricula across the university.**

Key Actions

1. Support faculty to integrate sustainability into new and existing courses
2. Track and assess sustainability course content using SUST attribute and faculty activity reports

- **Strategy 2.2 Expand sustainability learning opportunities beyond the classroom.**

Key Actions

1. Support departments and programs as they expand high-impact learning practices related to sustainability across colleges
2. Develop strong sustainability career pathways for students across disciplines, including paid opportunities for students to engage in the U's climate action
3. Expand informal opportunities for students to learn about climate change, its impacts, and solutions through events, clubs, etc.

30

Learn more and take action

climate.utah.edu




31

OPPORTUNITIES FOR ENGAGEMENT

- Climate Action
- SUST course attribute
- Sustainable Campus Initiative Fund (SCIF)
- Campus as Living Lab/Applied Sustainability Learning
- Edible Campus Gardens
- Sustainability Office monthly newsletter
- Sustainability Office social media
- [University of Utah Commuters](#) on Strava
- [Environmentally Preferable Purchasing Guidelines](#)




32



Thank you!

Questions?
sustainability@utah.edu



33

Thank you.

Kerry Case
sustainability@utah.edu



SustainableUofU



34

